

FIG.2

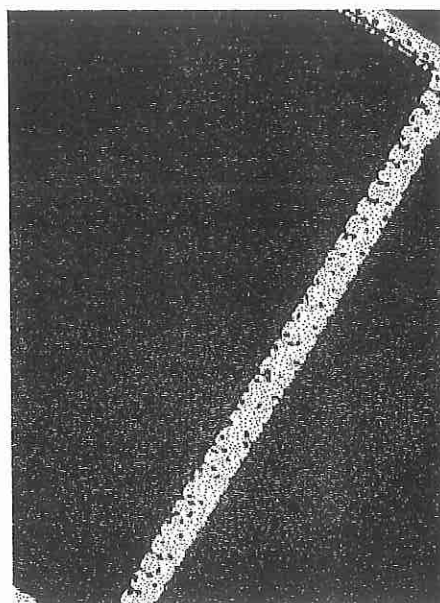


FIG.3

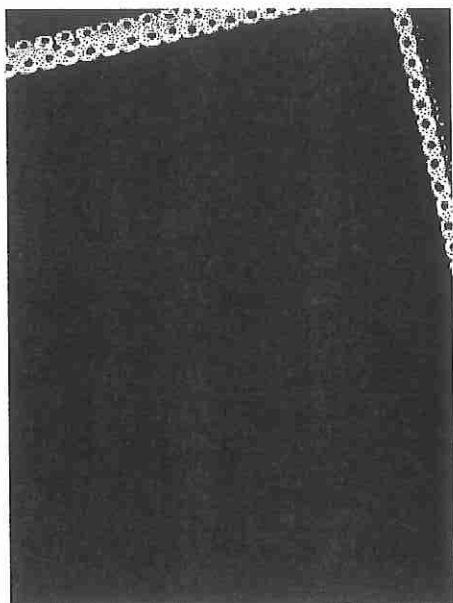


FIG.1



S D. AHUJA
OF D. P. AHUJA & CO
APPLICANT'S AGENT

2/13

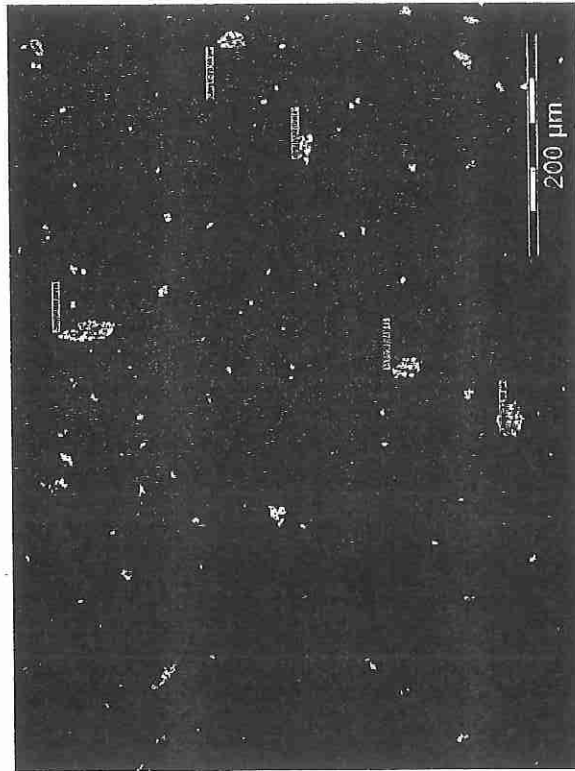


FIG.5



FIG.4

S D. AHUJA
OF D. P. AHUJA & CO
APPLICANT'S AGENT

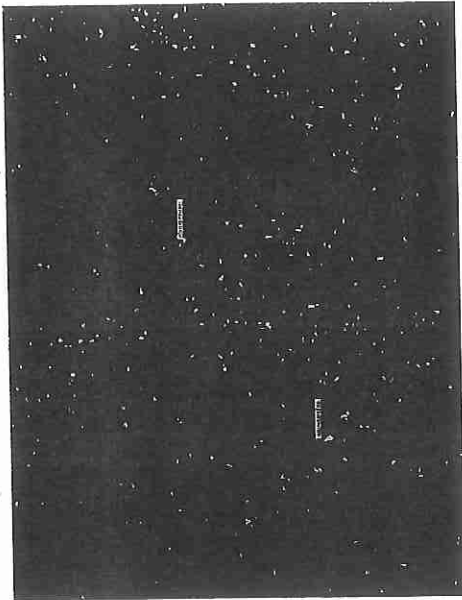


FIG.7

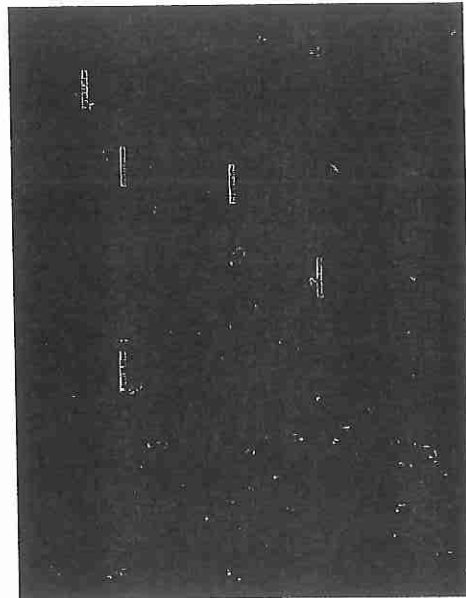


FIG.8

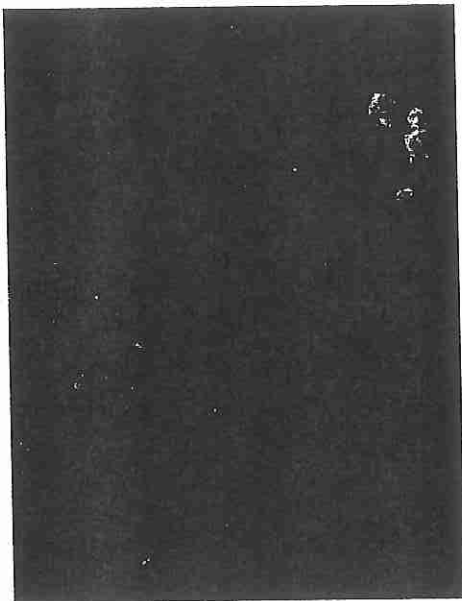


FIG.6

S D. AHUJA
OF D. P. AHUJA & CO
APPLICANT'S AGENT

4/13

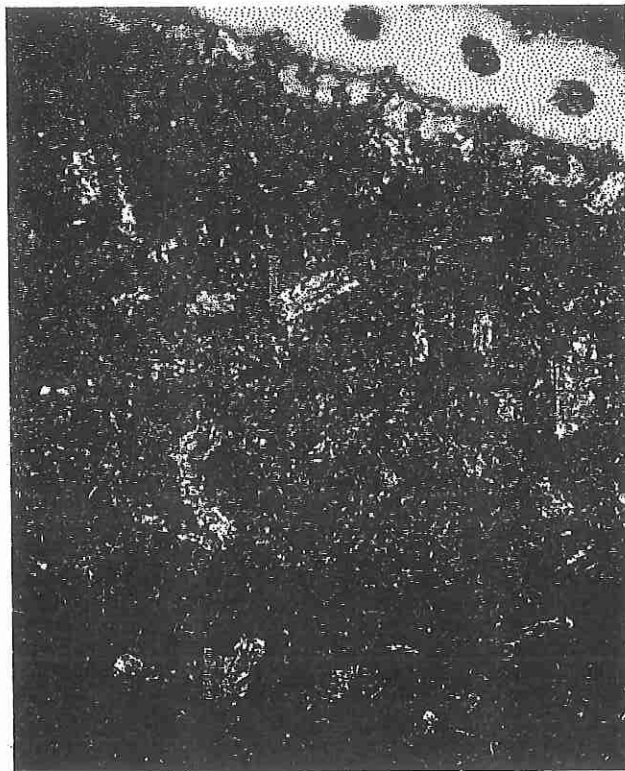


FIG.10

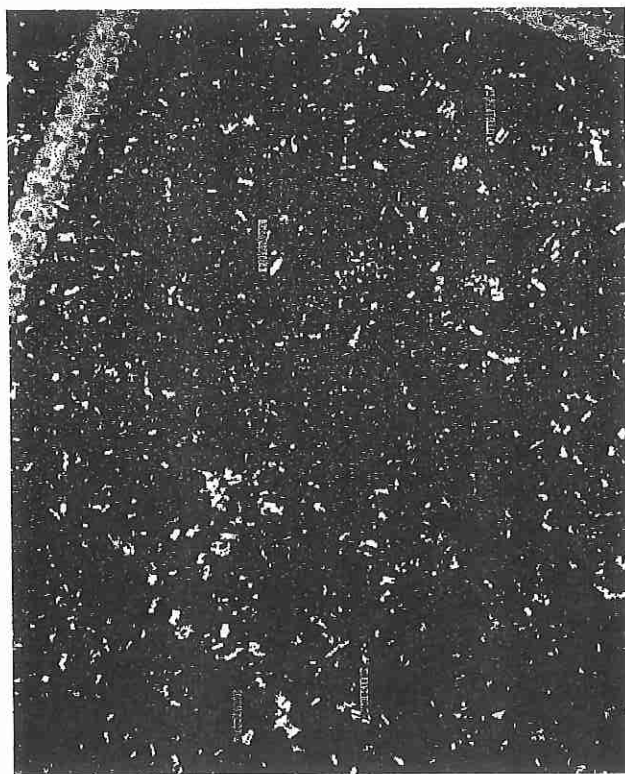


FIG.9

S D. AHUJA
OF D. P. AHUJA & CO
APPLICANT'S AGENT

5/13

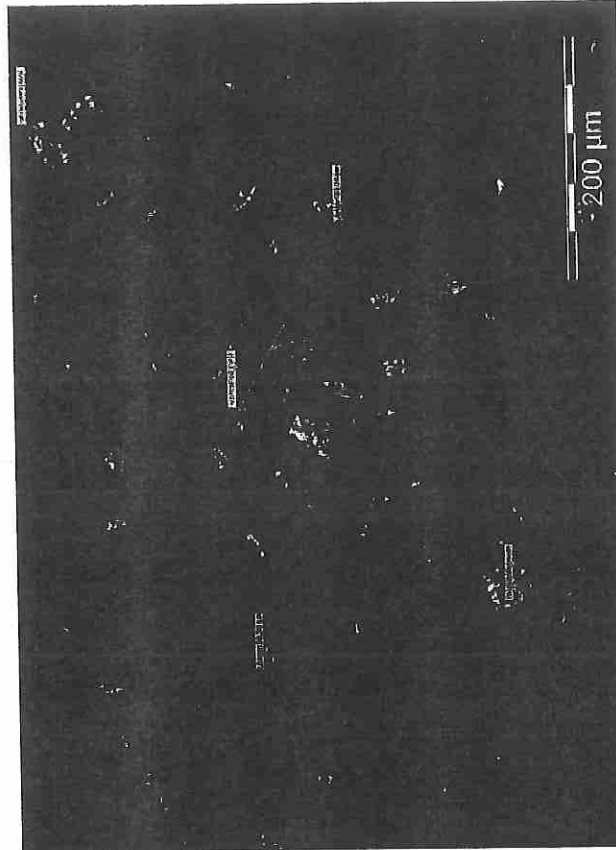


FIG.12

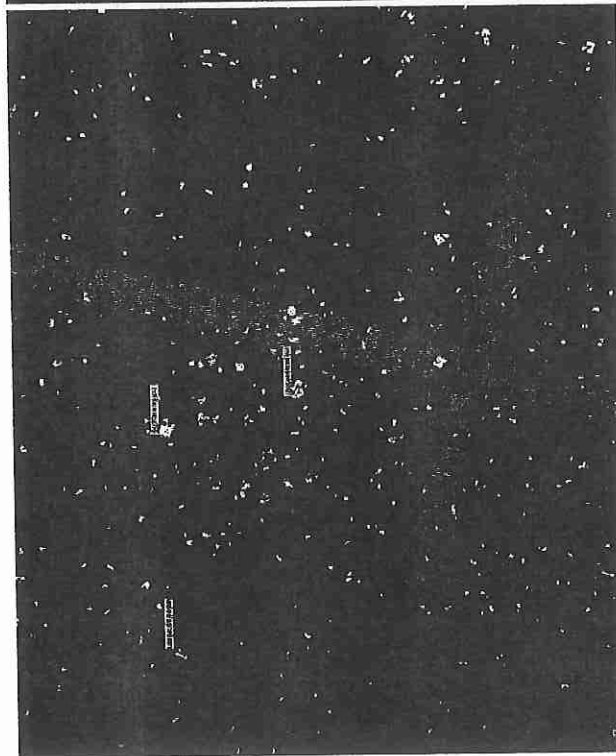


FIG.11

S D. AHUJA
OF D. P. AHUJA & CO
APPLICANT'S AGENT

6/13

	Size (d.n...	% Intensity	Width (d.n...
Z-Average (d.nm):	11,37	100,0	3,268
PdI:	0,048	0,0	0,000
Intercept:	0,961	0,0	0,000

Result quality Good

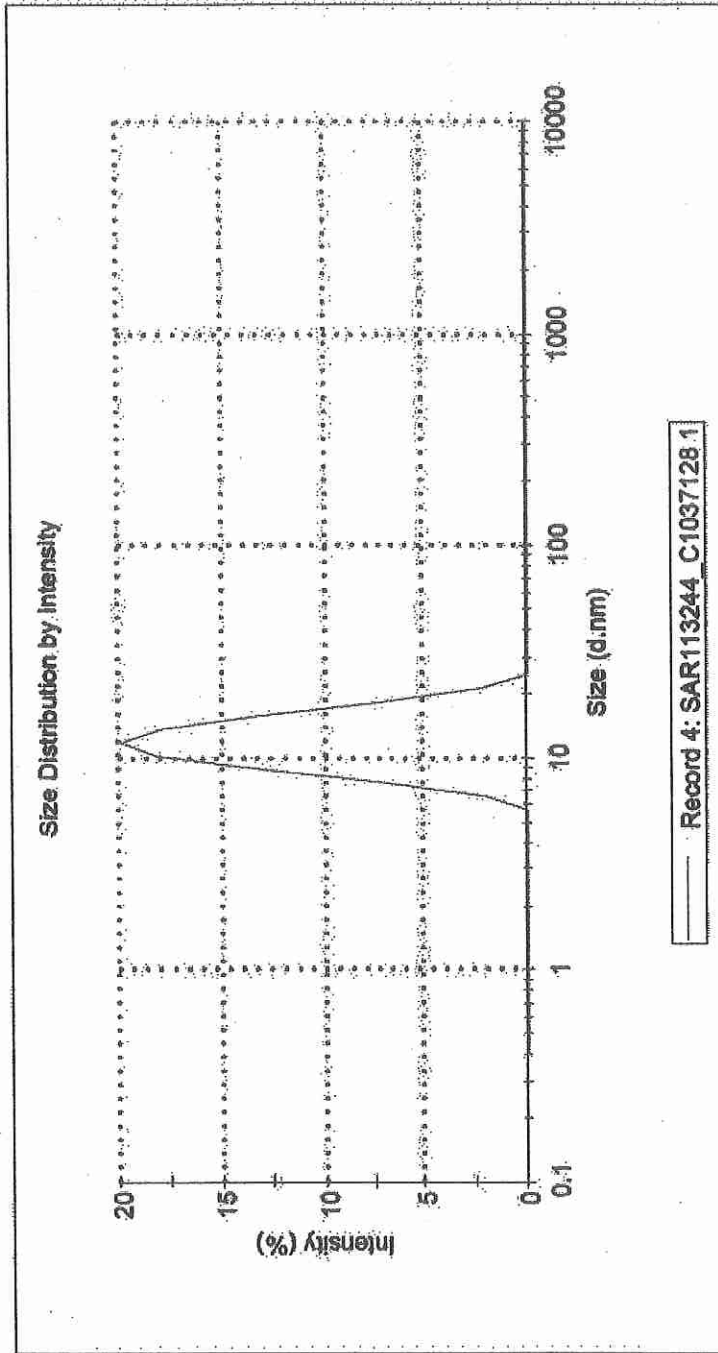


FIG.13

S D. Ahuja
S D. AHUJA
OF D. P. AHUJA & CO
APPLICANT'S AGENT

7/13

Width (d.n...)
4.541
0.000
0.000

% Intensity
100.0
0.0
0.0

Size (d.n...)
13.07
0.000
0.000

Peak 1:
Peak 2:
Peak 3:

Z-Average (d.nm): 11.66
Pdl: 0.104
Intercept: 0.960

Result quality: Good

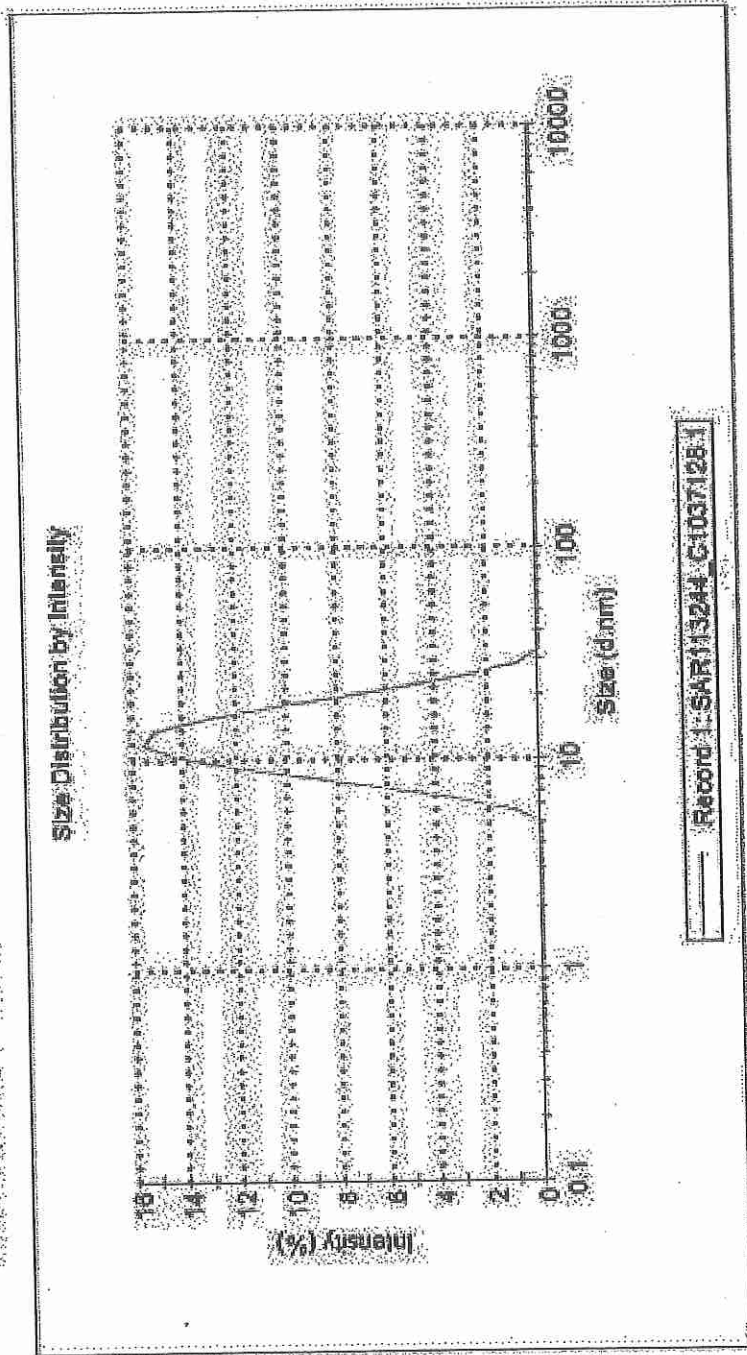


FIG. 14

S.D. AHUJA
OF D. P. AHUJA & CO
APPLICANT'S AGENT

8/13

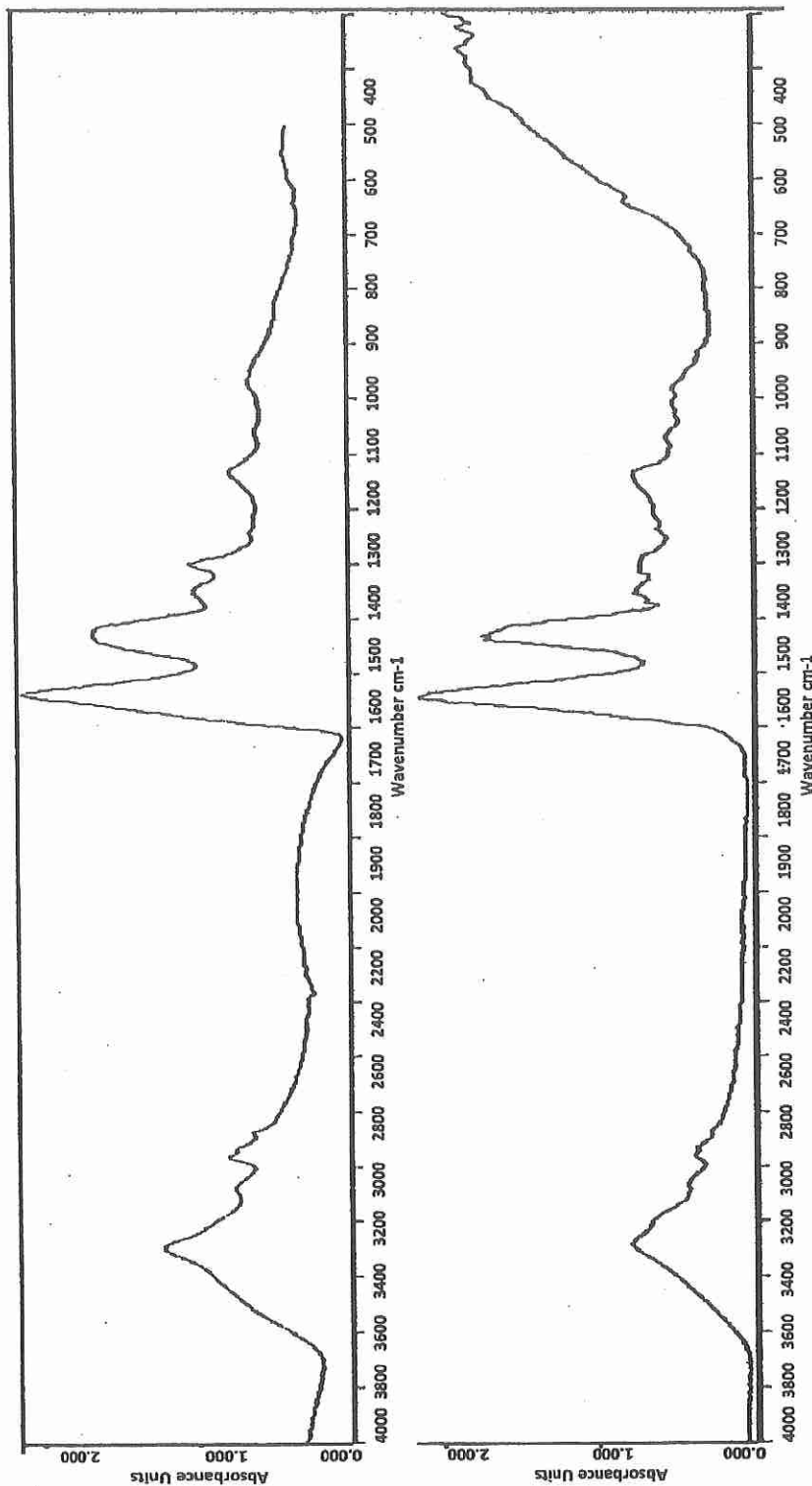


FIG.15

SUBSTITUTE SHEET (RULE 26)

S. D. Ahuja
S D. AHUJA
OF D. P. AHUJA & CO
APPLICANT'S AGENT

9/13

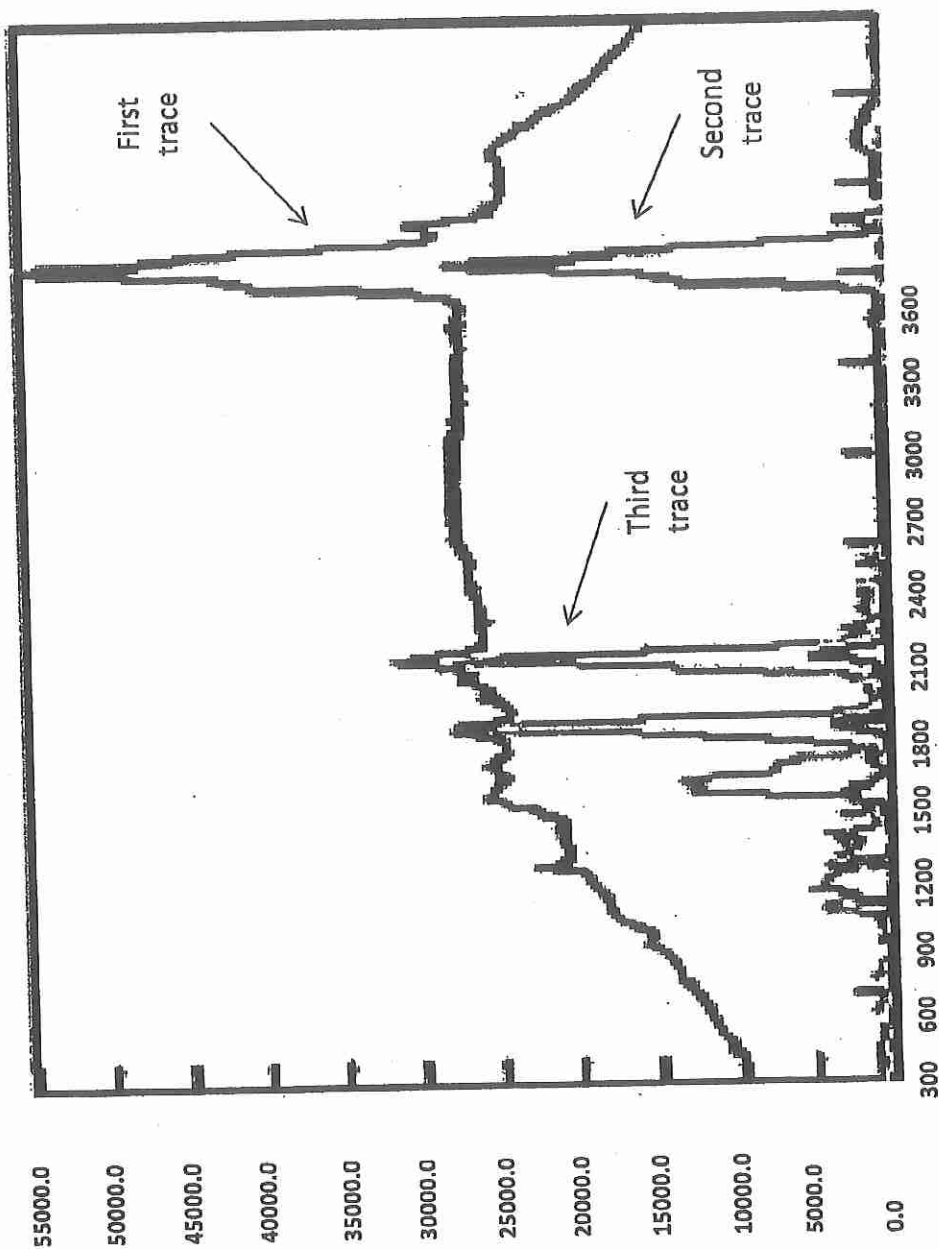


FIG. 16

10/13

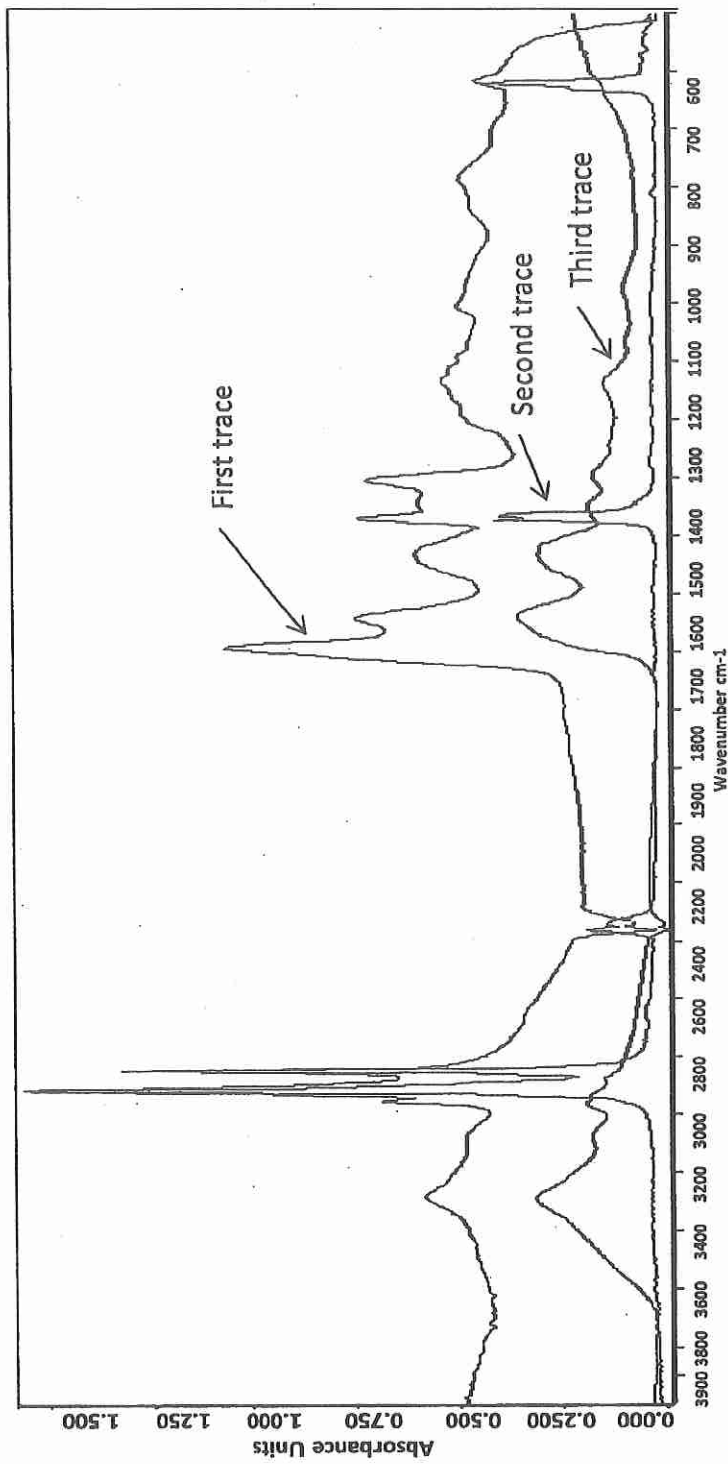



FIG.17

SUBSTITUTE SHEET (RULE 26)


S D. AHUJA
OF D. P. AHUJA & CO
APPLICANT'S AGENT

11/13

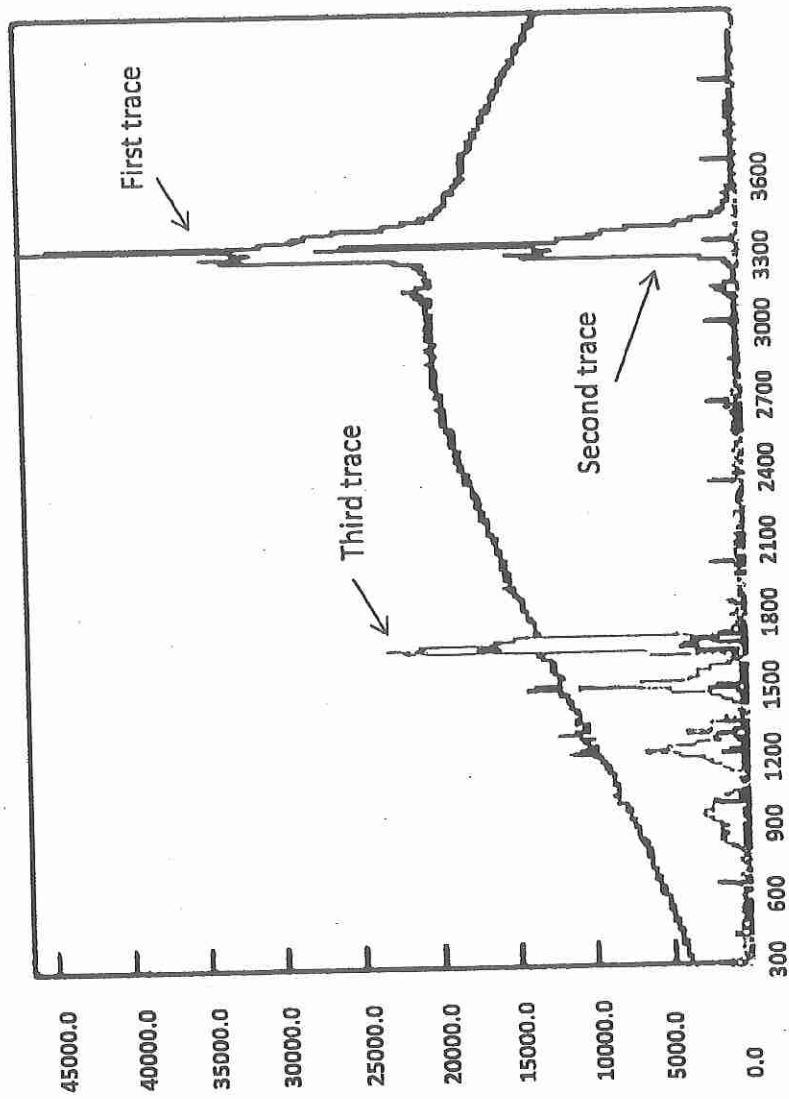


FIG.18

12/13

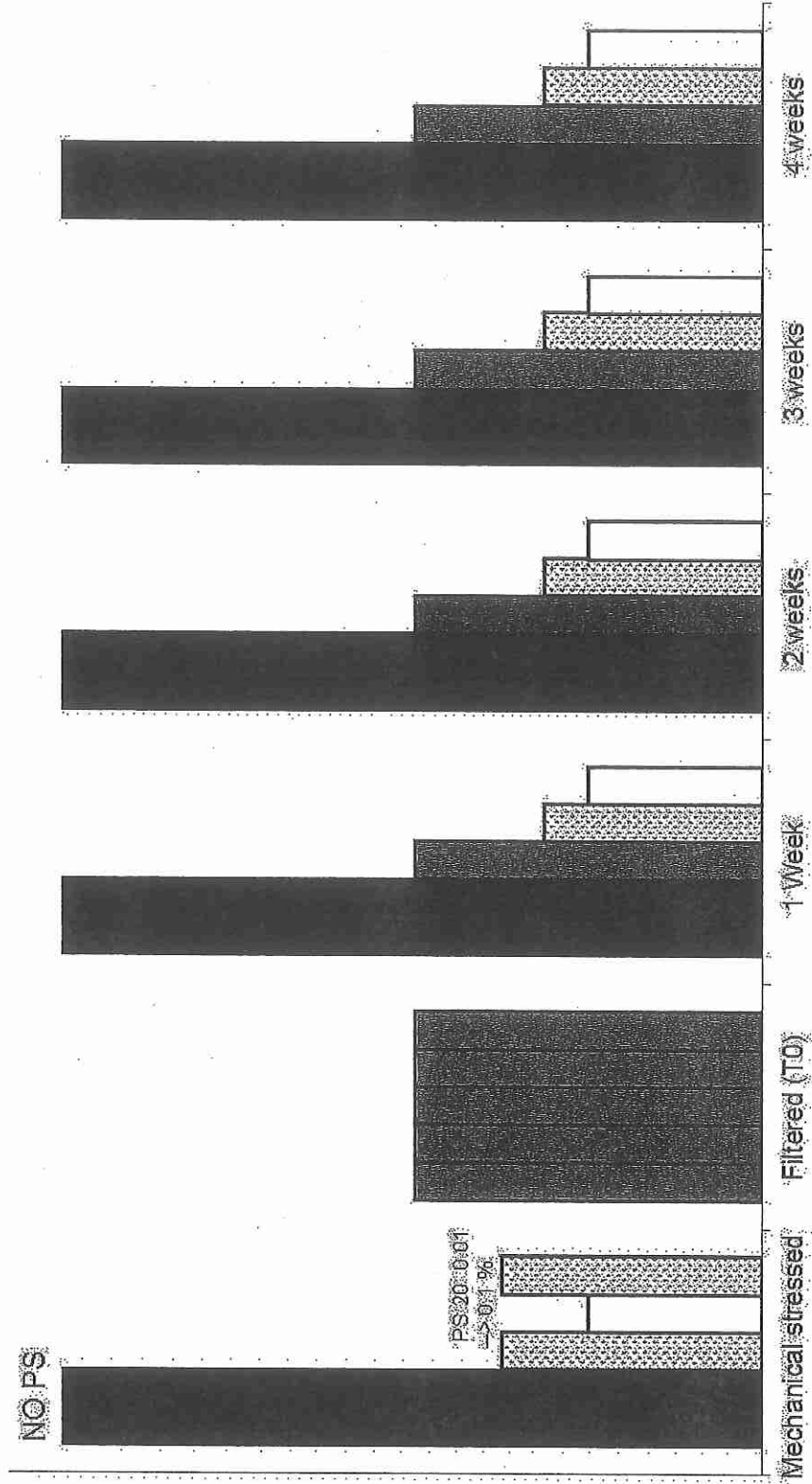


FIG.19

S D. AHUJA
OF D. P. AHUJA & CO
APPLICANT'S AGENT

13/13

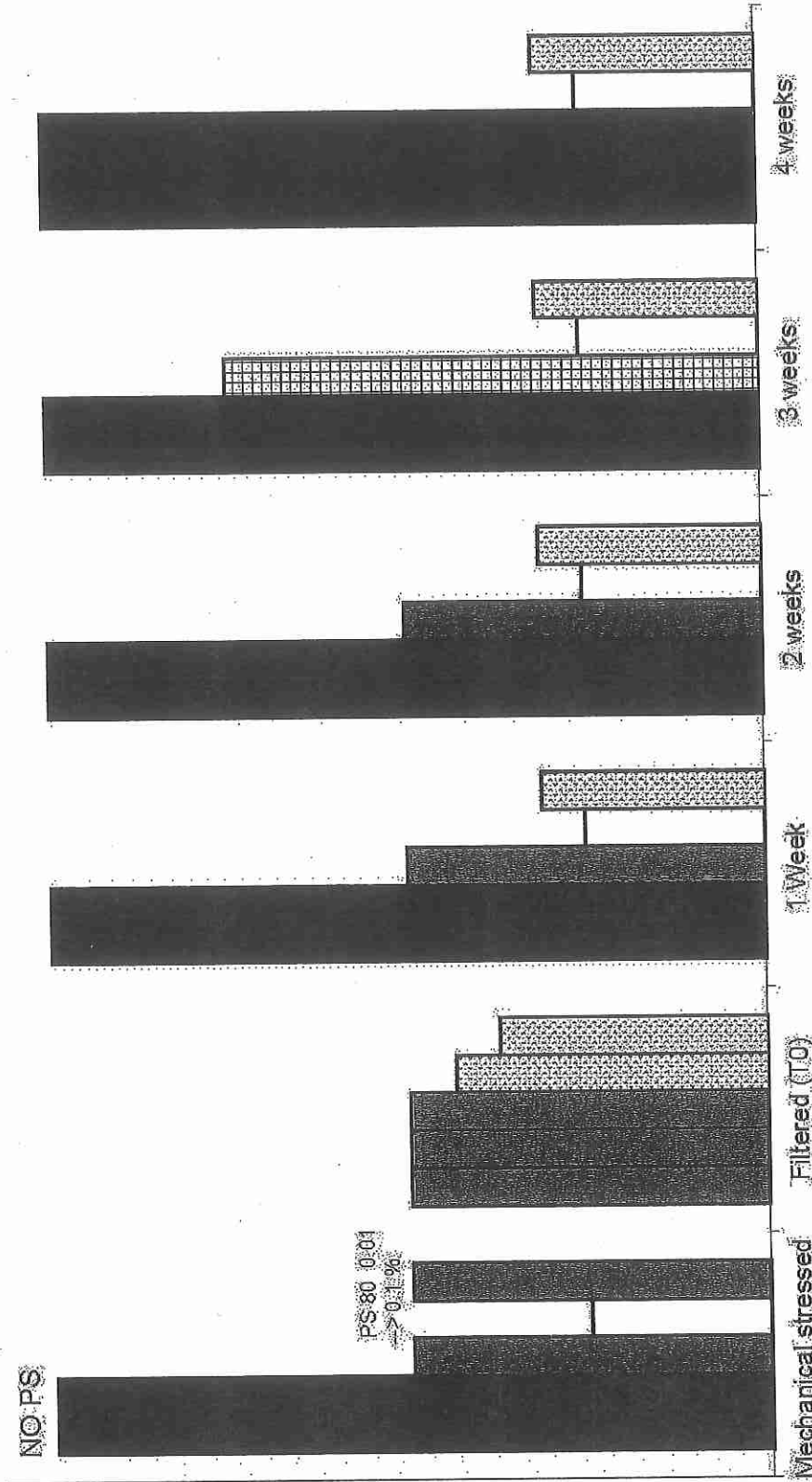


FIG.20

S D. AHUJA
OF D. P. AHUJA & CO
APPLICANT'S AGENT