

FIG.2

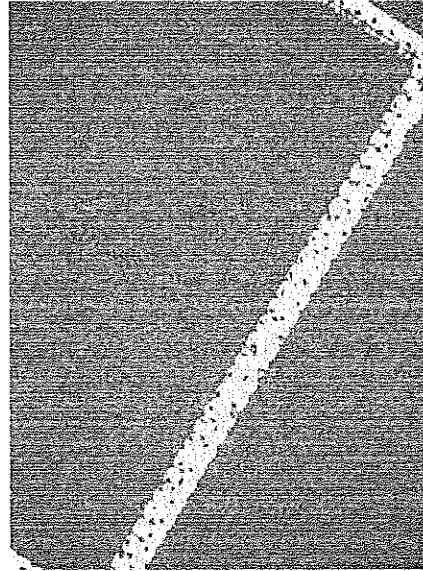


FIG.3

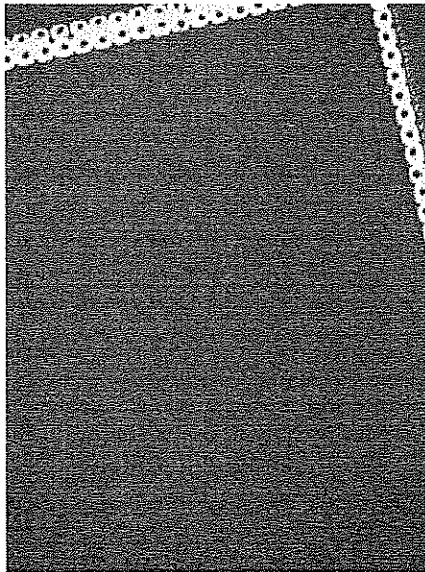


FIG.1

S. D. AHUJA
of D. P. AHUJA & CO.
APPLICANT'S AGENT

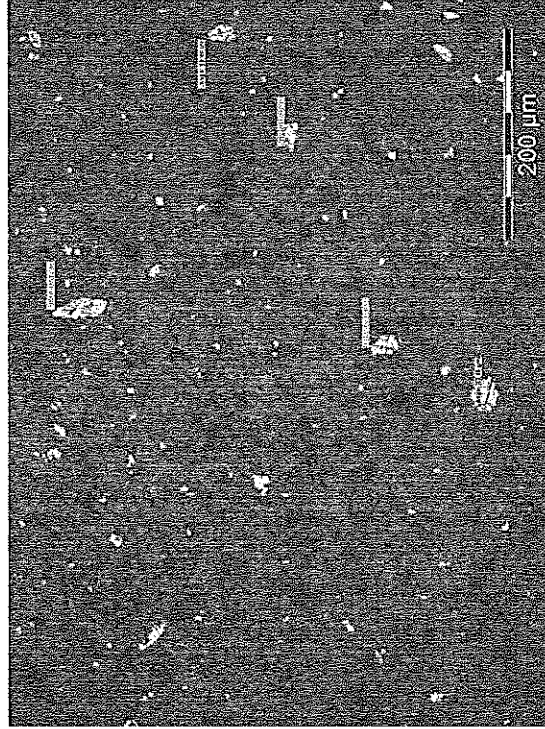


FIG.5

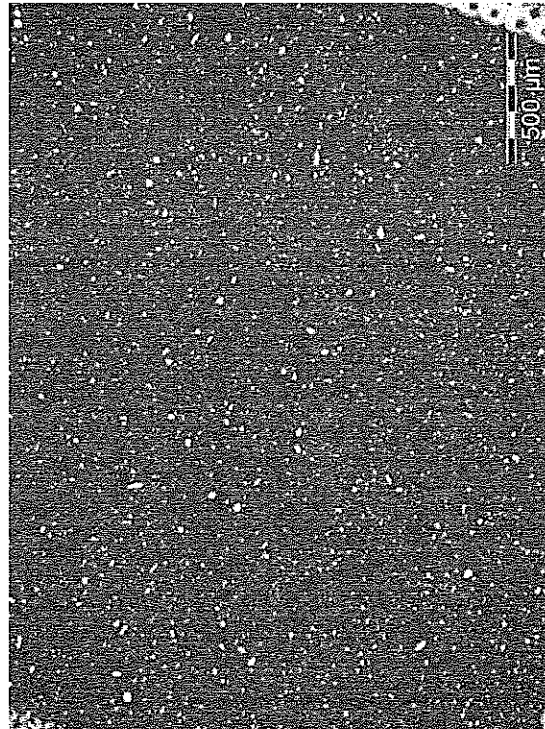


FIG.4

S. D. AHUJA
of D. P. AHUJA & CO.
APPLICANT'S AGENT

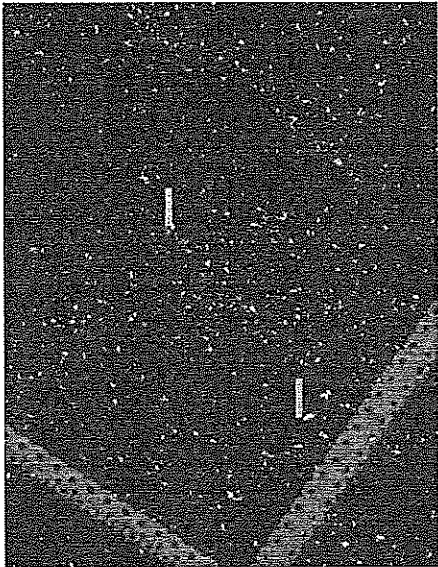


FIG.7

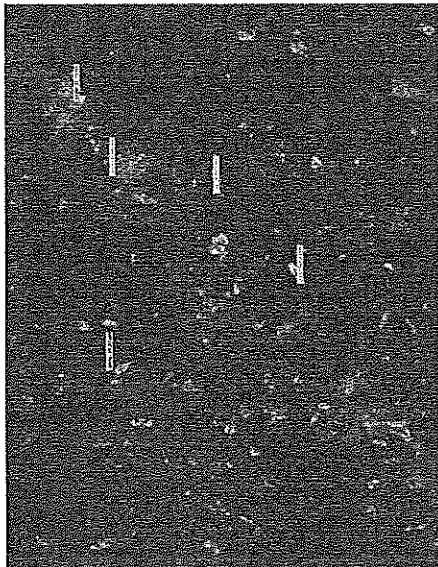


FIG.8

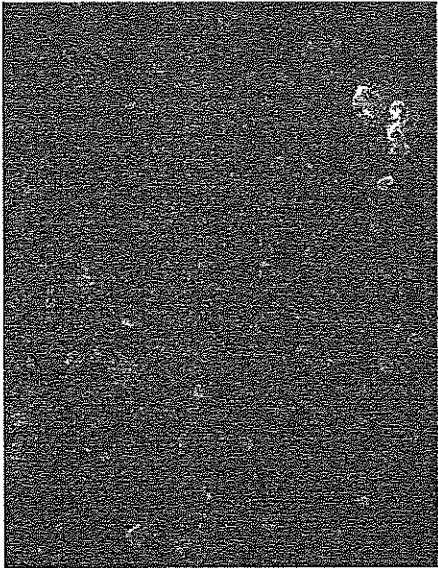


FIG.6

S. D. AHUJA
of D. P. AHUJA & CO.
APPLICANT'S AGENT



FIG.10

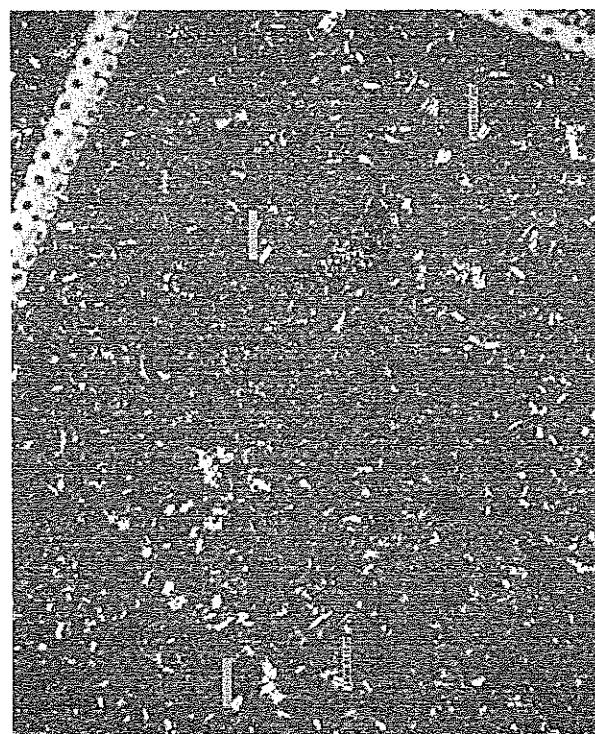


FIG.9

S. D. AHUJA
of D. P. AHUJA & CO.
APPLICANT'S AGENT



FIG.12

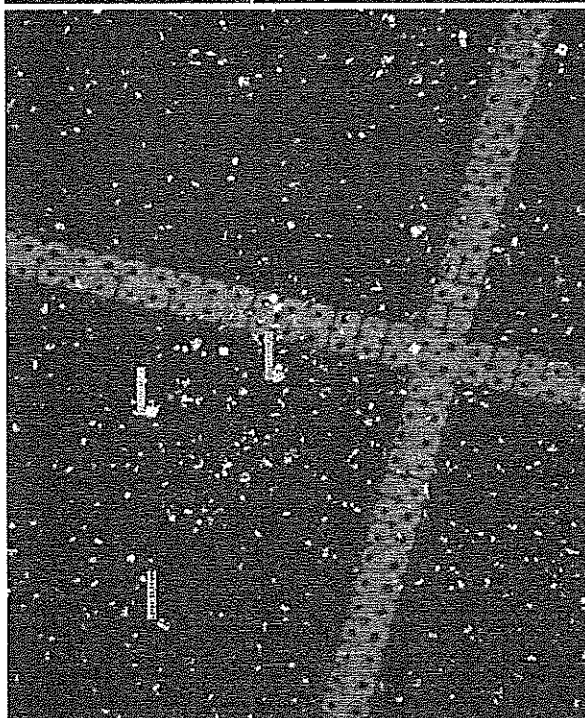


FIG.11

S. D. AHUJA
of D. P. AHUJA & CO.
APPLICANT'S AGENT

	Size (d.n...	% Intensity	Width (d.n...
Z-Average (d.n.m):	11,37	100,0	3,268
PdI:	0,048	0,0	0,000
Intercept:	0,961	0,0	0,000

Result quality Good

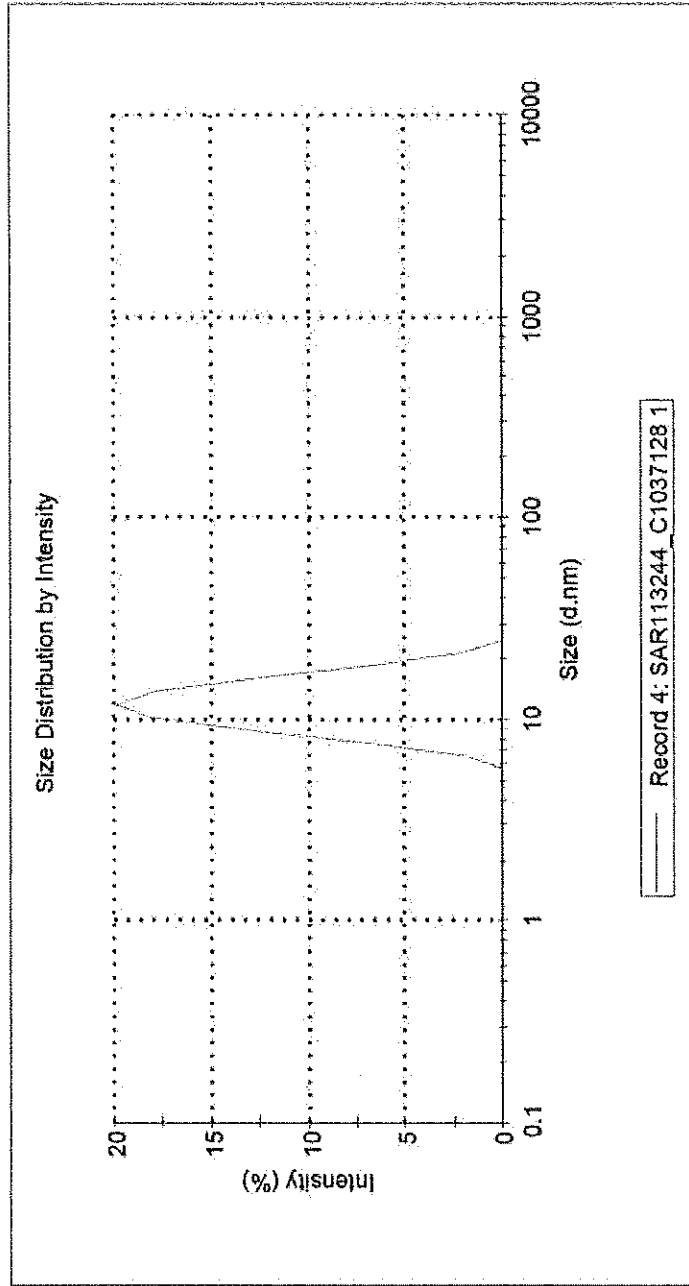


FIG.13

S. D. AHUJA
of D. P. AHUJA & CO.
APPLICANT'S AGENT

	Peak 1:	Peak 2:	Peak 3:	Size (d.n.m)	% Intensity	Width (d.n.m)
Z-Average (d.n.m):	11.66			13.07	100.0	4.541
Pdl:	0.104			0.000	0.0	0.000
Intercept:	0.960			0.000	0.0	0.000

Result quality Good

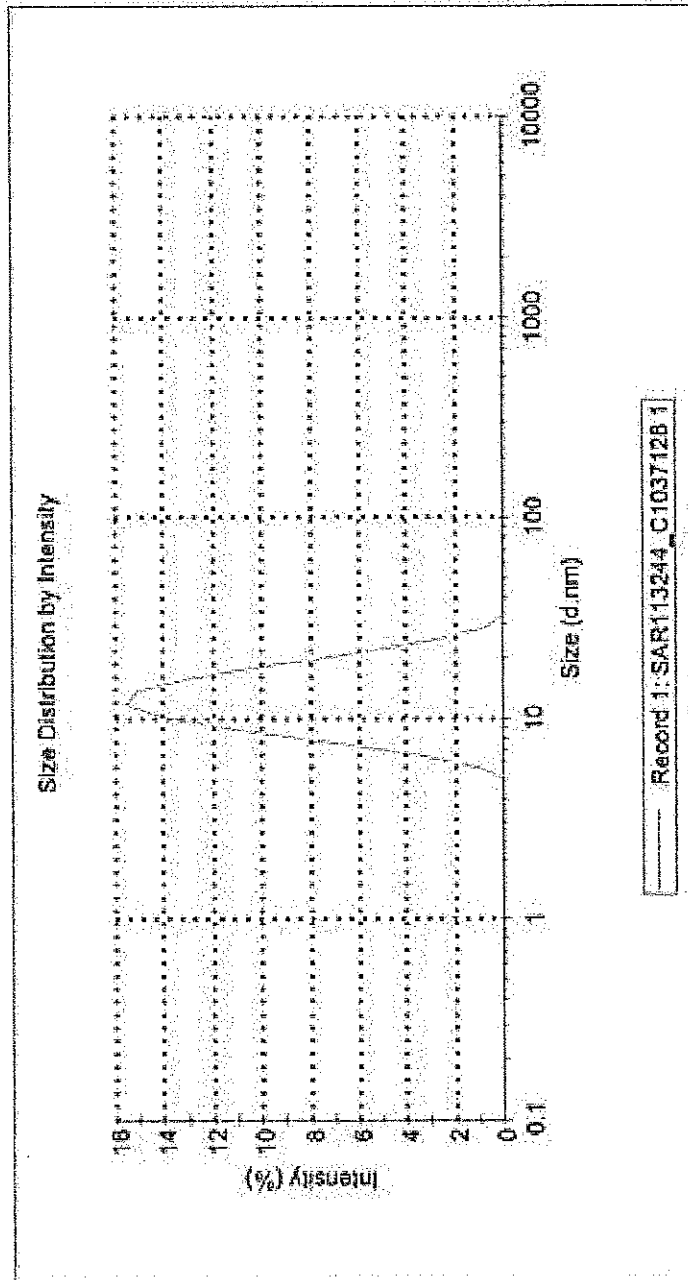


FIG.14

S. D. AHUJA
of D. P. AHUJA & CO.
APPLICANT'S AGENT

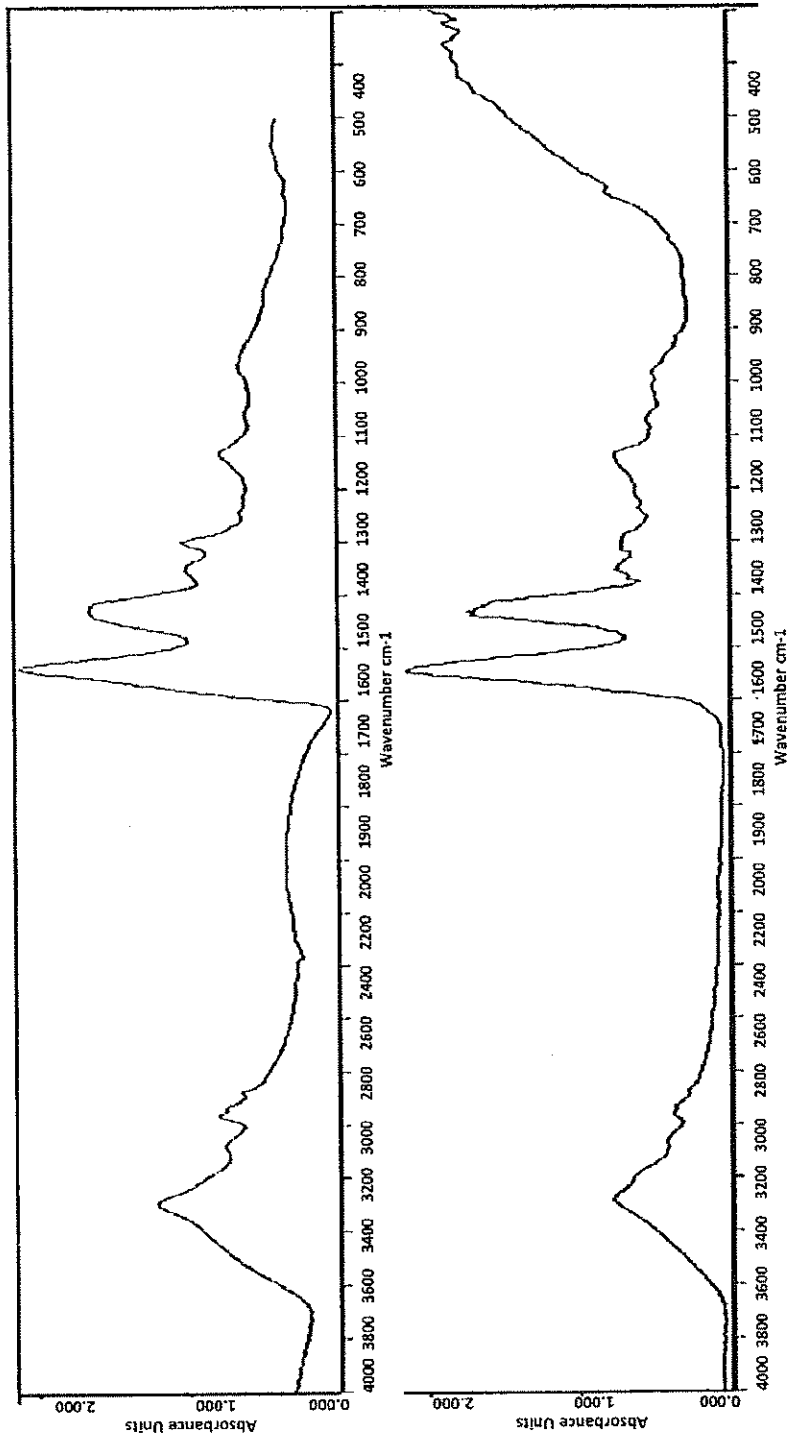


FIG.15

SUBSTITUTE SHEET (RULE 26)

S. D. AHUJA
of D. P. AHUJA & CO.
APPLICANT'S AGENT

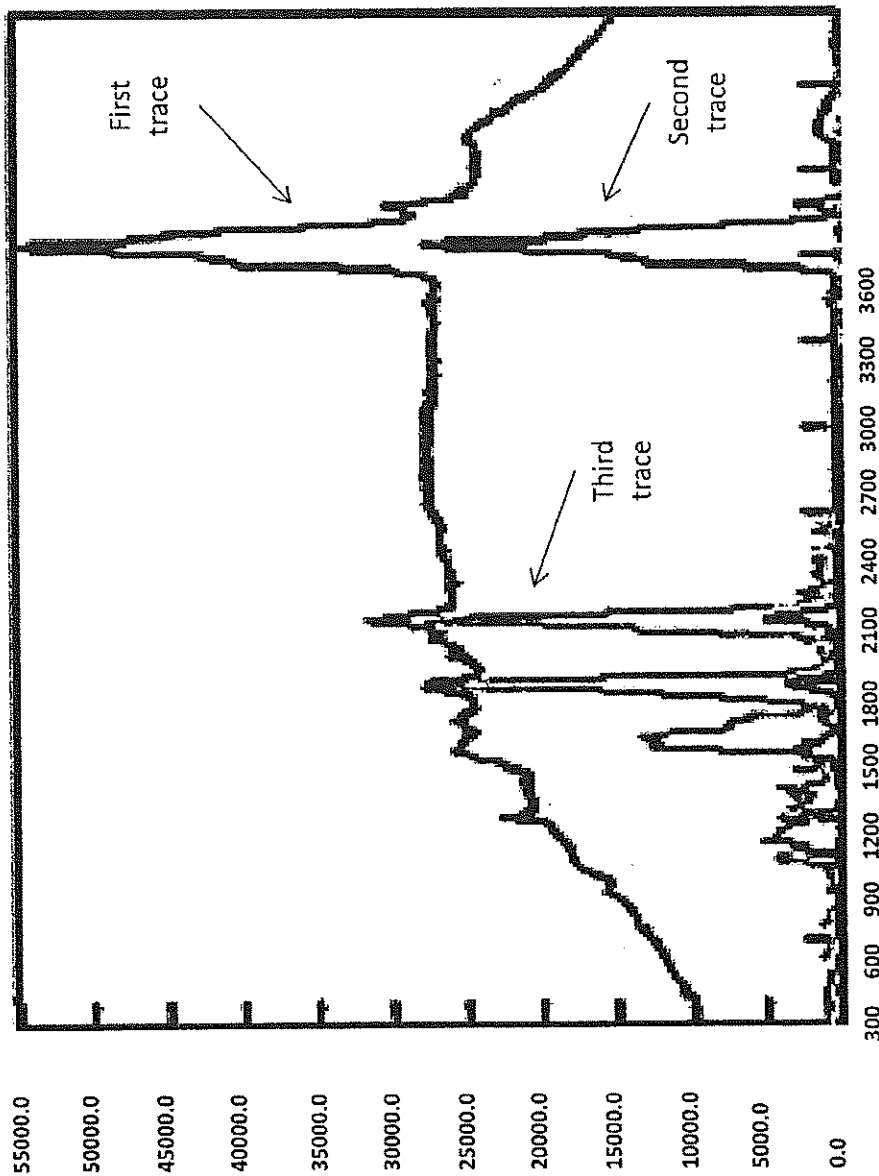


FIG.16

SUBSTITUTE SHEET (RULE 26)

S. D. AHUJA
of D. P. AHUJA & CO.
APPLICANT'S AGENT

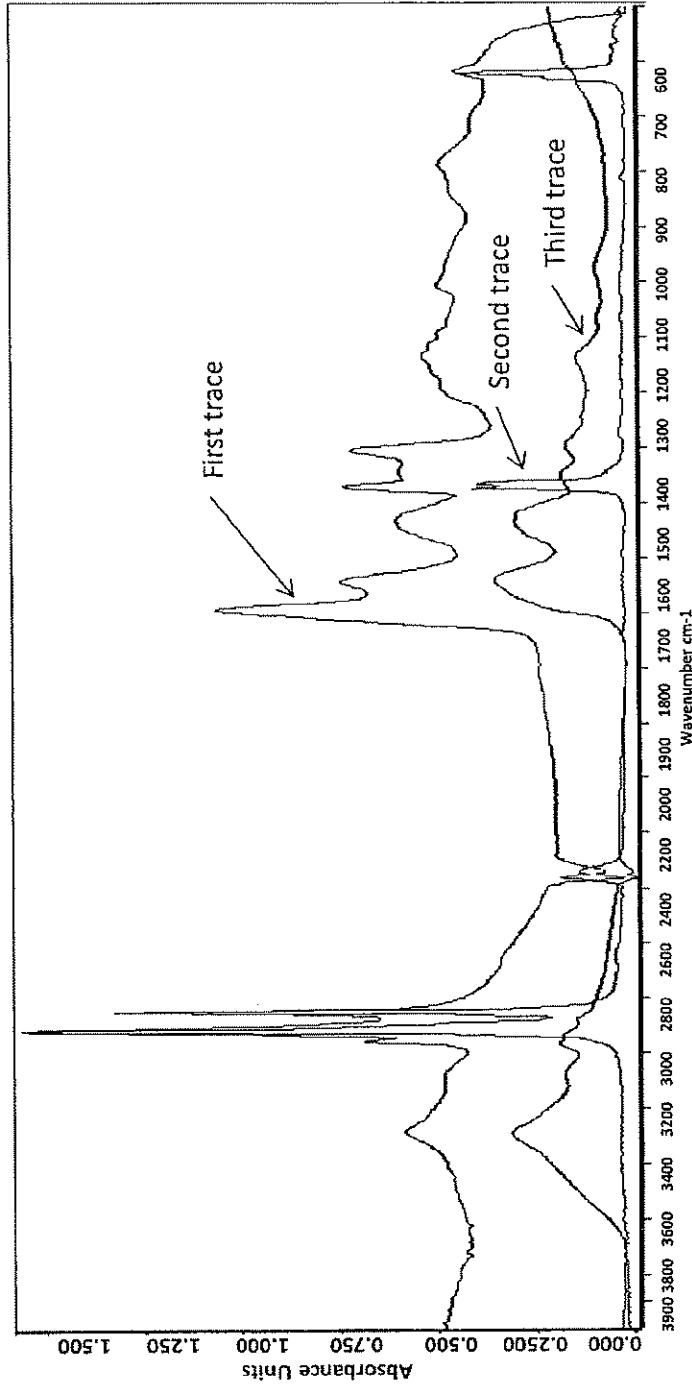


FIG.17

SUBSTITUTE SHEET (RULE 26)

S. D. AHUJA
of D. P. AHUJA & CO.
APPLICANT'S AGENT

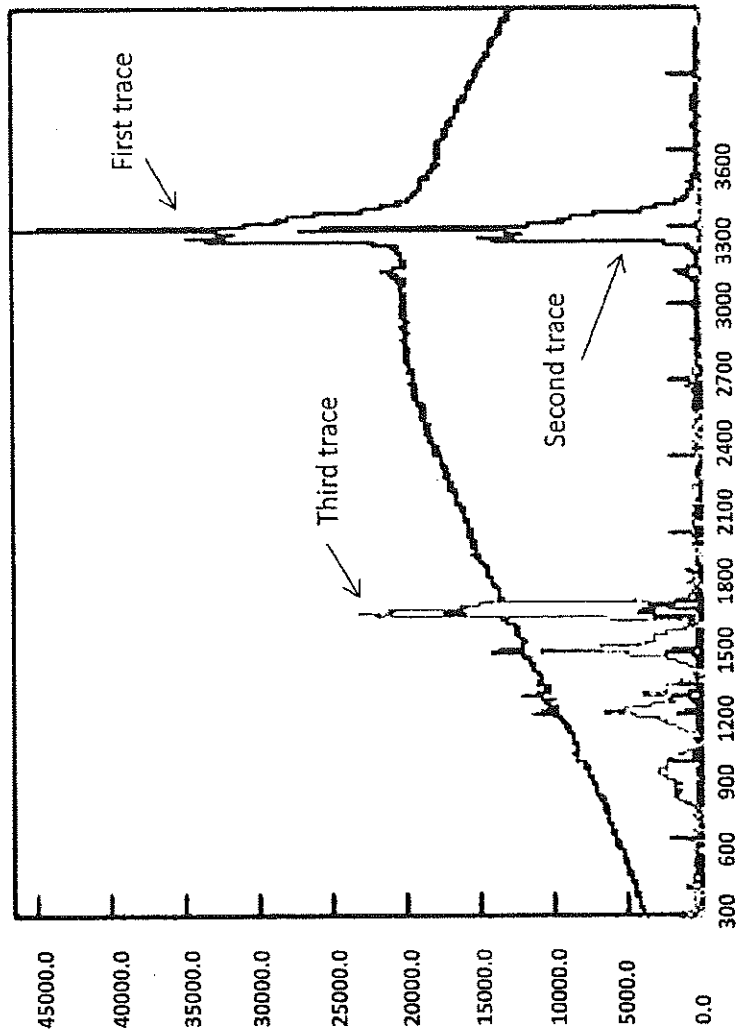



FIG.18

SUBSTITUTE SHEET (RULE 26)


S. D. AHUJA
of D. P. AHUJA & CO.
APPLICANT'S AGENT

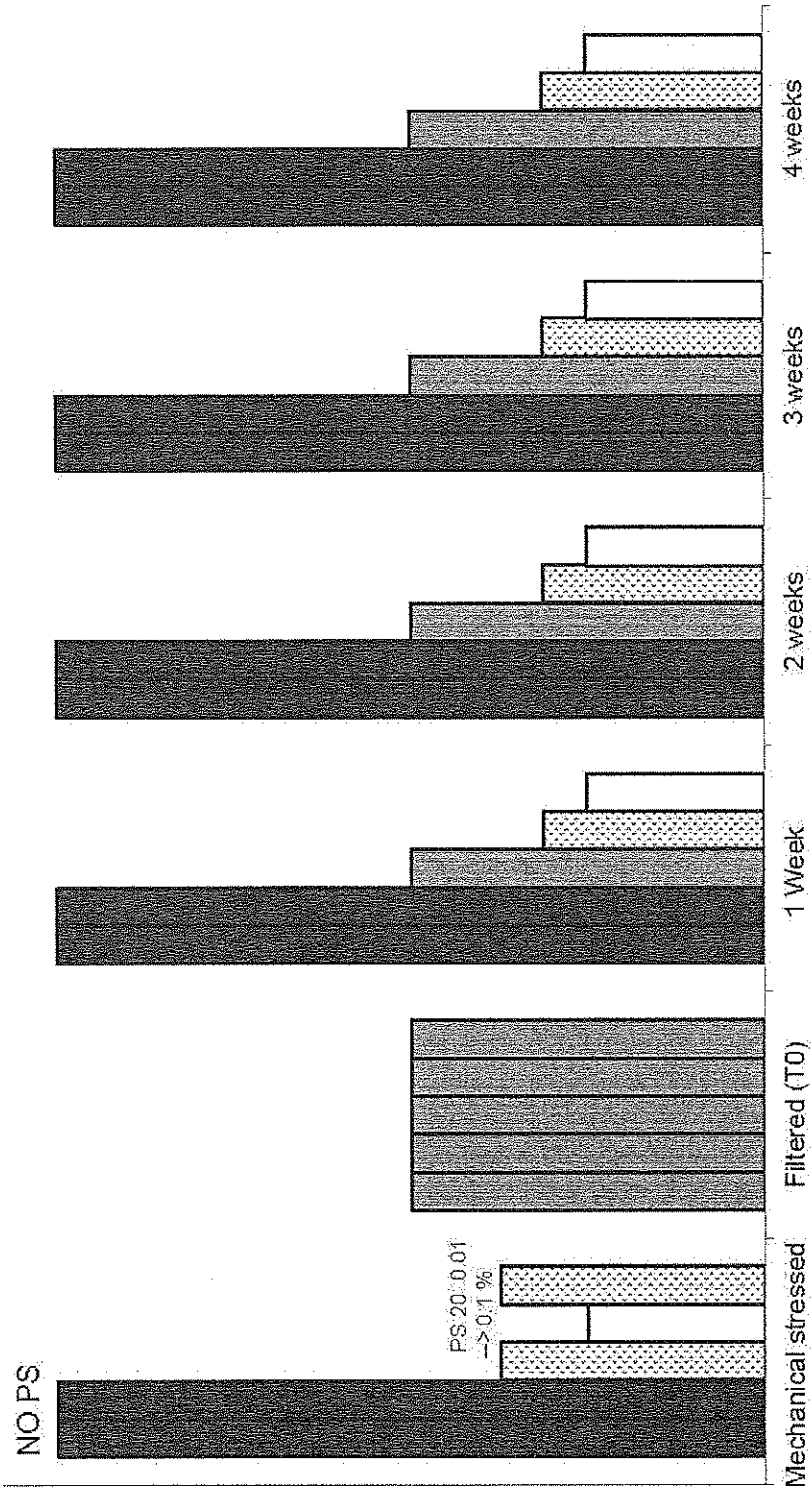


FIG.19

S. D. AHUJA
of D. P. AHUJA & CO.
APPLICANT'S AGENT

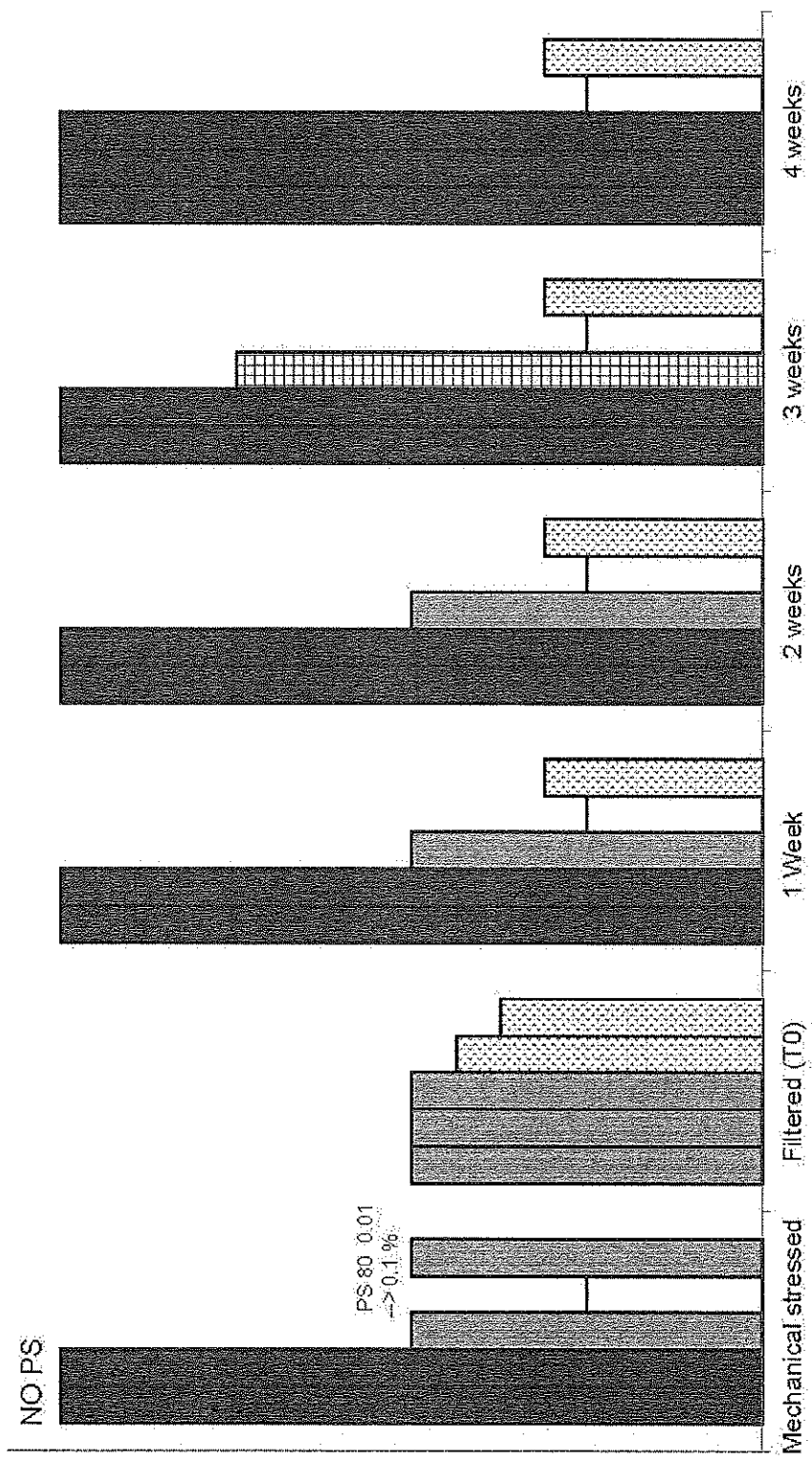


FIG.20

S. D. Ahuja
S. D. AHUJA
of D. P. AHUJA & CO.
APPLICANT'S AGENT